

# ST. LUKE ALUMNI NEWS

Summer, 2006 A Newsletter for the Alumni & Friends of *St. Luke the Evangelist School* Vol 1, No 2

## CALENDAR

May 6	Parish Appreciation Party
May 12	May Procession
May 24	Summer Blast
May 31	Principal's Story Hour - Barnes & Noble
June 13	Graduation - 7 PM
June 14	NETWORK and the Legislative Process— <i>Mary Elizabeth Clark, SSJ</i>
Aug 8,9	Summer Stock - Keswick Theater
Summer	Annual Golf Outing



*Sister William Adele, SSJ and students unpack new laptops*

## CONNELLY FOUNDATION TECHNOLOGY GRANT

Saint Luke School was awarded a *Connelly Foundation Technology Grant* for a **Wireless Laptop Cart**. The **Wireless Cart** includes 16 Laptops for classroom use, a laser printer and Microsoft Office. Saint Luke School was one of 95 schools that applied for the grant from either the *Sullivan Foundation* or the *Connelly Foundation*. We are one of 14 schools that received a *Connelly Foundation* Grant this past April.

In the words of the *Connelly Foundation*, “factors that influence the review process are strong leadership, stable enrollment, and willingness to advance faculty and students in integrating technology. Equally important was learning about your challenges and accomplishments with technology and the vision for your school.”

St. Luke's is deeply grateful to the *Connelly Foundation* for this wonderful opportunity to enhance our school technology.

## Bishop Burbidge's Visit

**Bishop Michael Burbidge** spent the day at St. Luke's on 3/29, visiting with students in their classes and meeting with teachers and parish priests. The Bishop truly got to experience “a day in the life” at St. Luke's, and in turn, St. Luke students were able to get a close-up and personal feel for what's it's like to be a priest and a bishop. During a 6th grade “tennis” gym class, the Bishop exhibited his usual charm when he mentioned that all seminarians are required to learn tennis, because “they are called to serve.” He shared many stories with the students, including the events leading to his call to the priesthood, and his appointment as Bishop. Teachers and priests met with the Bishop for a catered luncheon in the church hall.

Bishop Burbidge returned to St. Luke's the following weekend to say two Sunday masses, and informally met with parishioners after each mass in an outdoor reception.

## CONTACT US:

### Development Office

Attn: Beth Stieritz

St. Luke the Evangelist  
2316 Fairhill Avenue  
Glenside, PA 19038

215-572-0128

[Development@StLukeRC.org](mailto:Development@StLukeRC.org)

[www.StLukeRc.org/alumni.htm](http://www.StLukeRc.org/alumni.htm)

## DEVELOPMENT OFFICE

Summer approaches, and another school year at St. Luke School comes to a close. Before those “lazy, hazy, crazy days” set in, this second issue of the **St. Luke Alumni News** comes to you with the latest St. Luke happenings! St. Luke's Development Office officially opened in September, 2005. The Development Office serves many purposes and will take on many roles, the most important of which is to facilitate the *meaningful involvement of people in our mission and vision for the future.*

Development efforts can reach in countless directions and can take varied forms. The establishment of a strong **Alumni Association** is vital to all school development efforts. The purpose of this publication is to keep our alumni engaged and informed on alumni and school news.



*Bishop Burbidge visits St. Luke's*

### Alumni Association

Our Alumni Association is taking shape. Our ultimate goal in this area is to develop an up-to-date database of St. Luke Alumni, for purposes of Class Reunions and Special Events. Visit our web page for updates at:

[www.StLukeRC.org/alumni.htm](http://www.StLukeRC.org/alumni.htm)

e-mail us at:

[Development@StLukeRc.org](mailto:Development@StLukeRc.org)

OR

return the slip on page 3

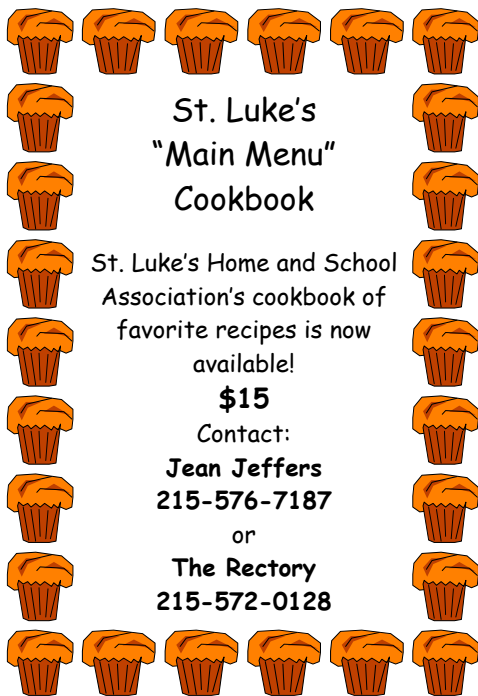
### On-Line Donations

St. Luke School is ready to accept **on-line credit card donations!**

Log on to [www.saintlukeschool.org](http://www.saintlukeschool.org), click on **Make A Gift**, and *make a difference* in the lives of the students at St. Luke School.



**Goodsearch**, a brand new search engine powered by Yahoo, will donate 1 cent to St. Luke School for every web search we do. Log onto [www.goodsearch.com](http://www.goodsearch.com), and designate **St. Luke the Evangelist School, Glenside PA** as your charity of choice. Check out the option to make Goodsearch your home page. Let's watch those pennies add up!



### St. Luke's "Main Menu" Cookbook

St. Luke's Home and School Association's cookbook of favorite recipes is now available!

**\$15**

Contact:

**Jean Jeffers**  
215-576-7187

or

**The Rectory**  
215-572-0128

### Neumann Scholar

On March 15, *Josephine Mandeville* and *Christine Connelly* from the Connelly Foundation paid a surprise visit to St. Luke School to name eighth grader **Todd Stieritz** a **2006 Neumann Scholar**, and present him with a four-year, full-tuition scholarship to an Archdiocesan High School of his choice. Todd was one of 1350 students who were invited and sat for the Neumann written exam, and was one of 37 students who were awarded a full scholarship (17 students received half-scholarships.) Criteria for selection included the exam and a written essay. Todd is the first Neumann Scholar from St. Luke's, and is planning to attend Bishop McDevitt.

The Connelly Foundation's Neumann Scholars Program honors St. John Neumann, the 4th Bishop of Philadelphia and founder of the Philadelphia parochial school system. The Neumann Scholar Installation Ceremony was held on April 30 at St. Joseph's University.

### Paper Recycling

By popular demand, St. Luke's is now recycling ALL of our School (classroom / office) and parish Paper. We have contracted with **Abitibi Recycling** who supplies us with a bright green / yellow **Paper Retriever Bin** free of charge (located in our lower lot), and pays us by the ton for our paper. Not only are we helping the environment, but are also saving on trash removal charges and making a little money too! Each classroom and office have a dedicated recycling container, and our **seventh grade students** have assumed the task of emptying the containers on a regular schedule. The recycling program is open to all school and parish families.

### Reunions

**1956** - 50th Reunion - June 3, 2006

*Spring House Tavern, Gwynned*

**Contact: Maria (Luca) Della Greca '56**  
dellagreca@juno.com

**1976** - 30th Reunion - date TBA

Committee forming - **Contact Development Office**  
development@StlukeRC.org

Classes of: '41, '46, '51, '61, '66, '71, '81, '86, '91, '96, '01  
**Contact Development Office**

## *Honor Roll*

### *Bishop McDevitt - First Honors Third Quarter*

Joseph Baker, Fiorvante Bucci, Giuseppe Bucci, Matthew Davis, Angela Donatelli, MaryKate Doyle, Nicole Gordon, Michael Jaecks, Jennifer Johnson, Michael Margavitch, Todd Meinke, John Melchiorre, Brian Mitros, Megan O'Sullivan, Lauren Siegfried, Edward Spencer, Courtney Wittek

### *LaSalle H.S - First Honors First Semester*

John Buonomo, Patrick Cunnane, Joseph Hughes, Matthew Ihlein, Patrick Melvin

### *Mount St. Joseph Academy Honors - First Semester*

Catherine Dunn, Christine Dunn, Rachel Ford, Karen Hart, Margaret Libonati, Shannon Mahoney, Suzanne Mahoney, Kaitlin Scher, Emily Walters

### *Roman Catholic - First Honors Third Quarter*

Sean Angiolillo, Patrick Brownsey, Andrew Jacoby, Matthew Johnston, Andrew Regan, Thomas Sinclair

### *St. Basil Academy - Honors Third Quarter*

Ellen Cox, Joan Croskey, Caroline Hughes, Ashley Junod, Mary McGrath, Colleen Regan, Sheila Watko

**1969 - Pete Siegfried** is employed at Gerhard's Appliances in Glenside. Pete is proud of Gerhard's new showroom, and invites all Alumni and friends to stop by the "Living Kitchen" for sampling and chef demonstrations. Pete resides in Glenside with wife Pat and children Lauren and Drew.

**1978 - Jeani Cassidy** and Steve Hober were married on 5/20 at St. Luke's.



## **CLASS NEWS**

**1985 - Beth (Purdy) Hanson** will move to Gulfport MS in July to join her husband, who is returning from Iraq.

**1987 - Eileen (Simonson) Hiebler** resides in MD with husband Charlie and children, Julia (3) and Ryan (2). Eileen retired from a management position at MBNA, and now works from home as a writer for *The Merchandiser Newspaper*.

**1989 - Hank Sharkey** is the Manager of Internal Audit and Compliance for Jones Apparel Group in Bristol, PA. He resides in Horsham with wife, Jennifer, and one-year-old son Liam John.

**1990 - Kelly Byrne and Patrick Doyle** will be married at St. Luke's on 11/25/06. Reception will be at Normandy Farm.

**1990 - Kristin Byrne and Robert Wertz** were married on August 13, 2005 at St. Luke's with a reception following at North Hills. Kristin is Senior Coordinator for Contract Services for Coventry in Fort Washington.

**1991 - Jocelyn Dean** and Andrew Kerekovic were married on 4/29 at St. Luke's. **Sarah Clark '91** was in the wedding party. Jocelyn is employed by Financial Health Services in Flourtown in Accounts Payable.

**1991 - Regina Gallagher** and David Knorr were married on 5/12 at St. Luke's.

**1992 - Amy Nosal** and Benjamin Wood were married on 5/13 at St. Luke's.

**1997 - Jillian Mele** accepted a position with WAGM TV-NEWS SOURCE-8 in Presque Isle, Maine. (a CBS affiliate). Her job involves both news and sports reporting and anchoring. Jillian is a 2005 graduate of LaSalle University.

**2006 - 36 members of the Class of 2006** were inducted into the St. Luke Alumni Association in early June. This is the first graduating class to be officially inducted into the Alumni Association.

**We'd like to hear from YOU!**

Name \_\_\_\_\_ Class of \_\_\_\_\_

Maiden name (if applicable) \_\_\_\_\_

Address \_\_\_\_\_

City \_\_\_\_\_ State \_\_\_\_\_ Zip \_\_\_\_\_

Phone \_\_\_\_\_

E-mail \_\_\_\_\_

Tell us what's new with you: \_\_\_\_\_

\_\_\_\_\_

\_\_\_\_\_

**Mail to:** Development Office - 2316 Fairhill Avenue, Glenside PA 19038 *or visit* [www.StLukeRc.org/alumni.htm](http://www.StLukeRc.org/alumni.htm)

**St. Luke the Evangelist**

Development Office

2316 Fairhill Avenue

Glenside, PA 19038

Development@StLukeRc.org

TO:

*All Alumni and Friends of St. Luke's*